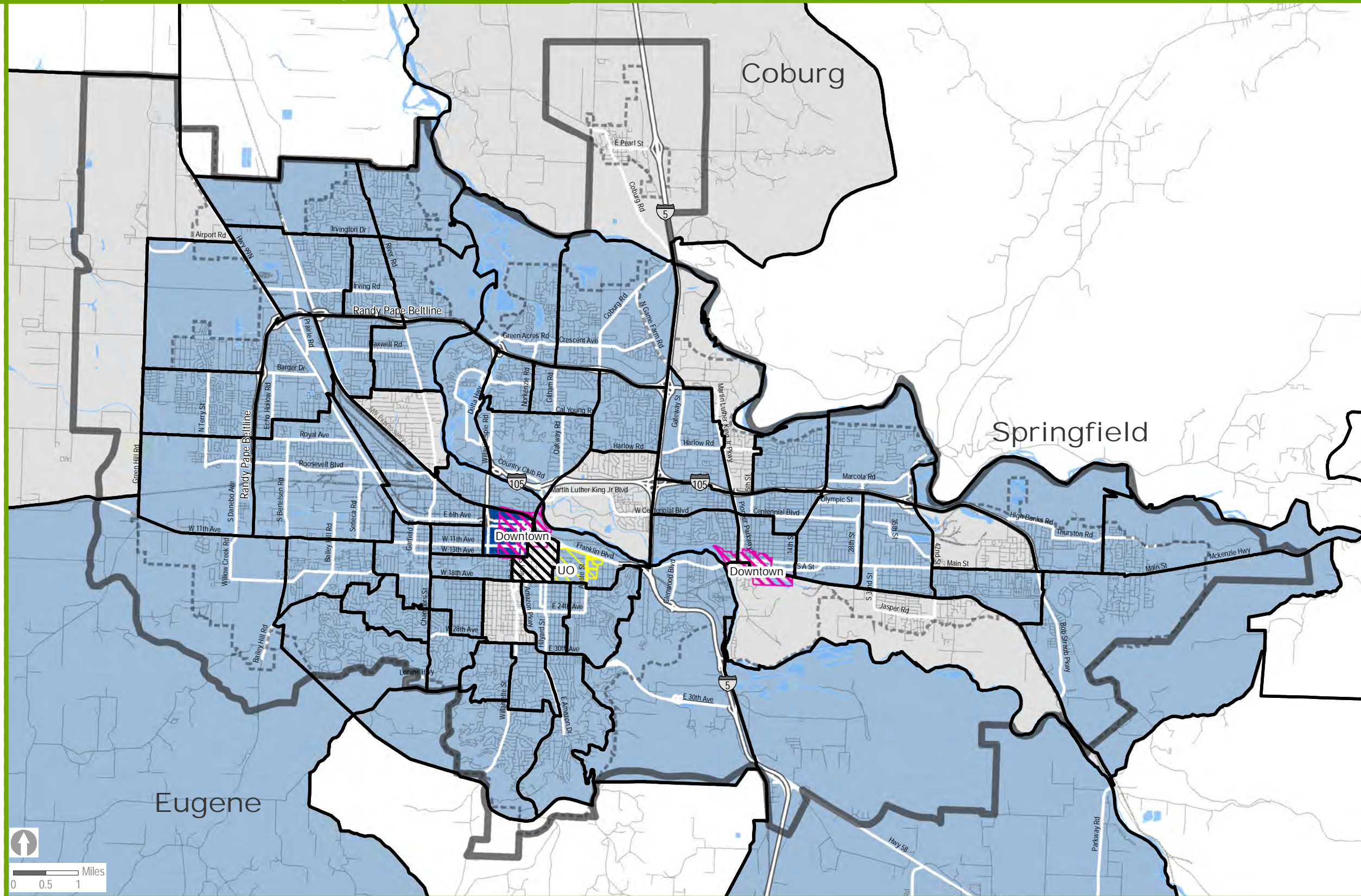


Equity & Opportunity Assessment Housing Access

Homeowner Cost Burden

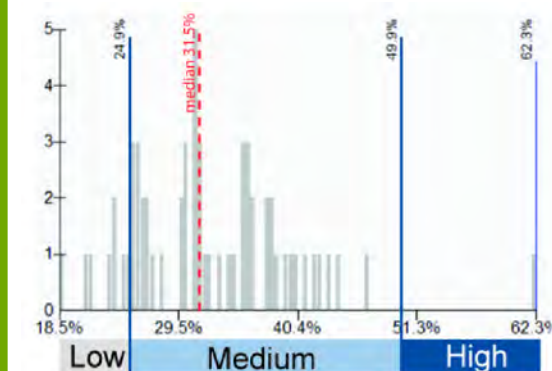


This map shows the percent of owner housing units that have a housing cost burden. About 32% of owner households in the Metropolitan Planning Organization area census tracts have a housing cost burden.

A household experiences a housing cost burden when they spend more than 30% of their annual gross income on housing costs. For owner households this data reflects homes with and without a mortgage.

For this map, the data was classified with defined breaks of 0-24.9%, 25-49.9%, and 50% and over. This is the same classification as the renter housing cost burden map for comparison purposes. The tract with 100% housing cost burden was excluded in the data classification to account for its outlier status. Even though this tract was excluded from the data classification, it was still included in the composite as a high percentage tract.

A histogram is included to show how the data is distributed in the three categories. Less than 1% of owner households with a housing cost burden are in the top 2 tracts in the highest percentages.



Map date: 8/28/13 Map data: U.S. Census Bureau, Census 2007-11, Table B25091
 Caution: This map is based on imprecise source data, subject to change, and for general reference only.
 The work that provided the basis for this map was supported by funding under an award with the U.S. Department of Housing and Urban Development. The substance and findings of the work are dedicated to the public. The author and publisher are solely responsible for the accuracy of the statements and interpretations contained in this publication. Such interpretations do not necessarily reflect the views of the Government.

- Census 2010 Tracts
- Metropolitan Planning Organization Area boundary
- Urban Growth Boundaries

Percent of Owner Occupied Households with a Housing Cost Burden

- Low: 18.5% - 24.9%
- Medium: 25% - 49.9%
- High: 50% - 62.3%
- Tract with 100% Cost Burden

The chart to the right shows the number of tracts in the Metropolitan Planning Organization Area that have low, medium, or high percentages.

